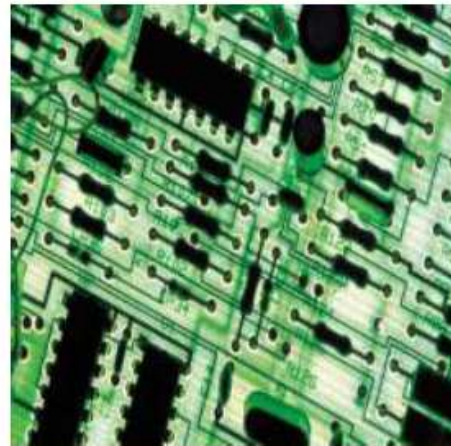


+

# Company Profile

Asiatelco Technologies Co.



**We Offer... We Deliver...**



# Overview

## *History*

- Established in Sept. 2003 , located at Zhangjiang Hi-tech Park, Shanghai, China.
- Launched its 1<sup>st</sup> CDMA product in Aug. 2004
- 1<sup>st</sup> GSM/GPRS product in Sept. 2006
- 1<sup>st</sup> CDMA EVDO product in May, 2009
- Awarded as “Hi&New Technology Company of China” in 2009
- 1<sup>st</sup> 4G LTE product in Sept. 2010
- Awarded as “Technology Fast 500 Asia Pacific 2010”, by Deloitte
- Awarded as “Technology Fast 50 China 2010”, by Deloitte
- Operated in 11 global offices till date
- ATEL products have been sold to more than 30 countries till date

## *Mission*

- To be a leading supplier who offers MOST competitive wireless terminal products and solutions to wireless telecommunication operators/solutions providers worldwide.

## *Asiatelco's Value Proposition*

*We Offer... We Deliver...*

# Overview

## ***Business Model***

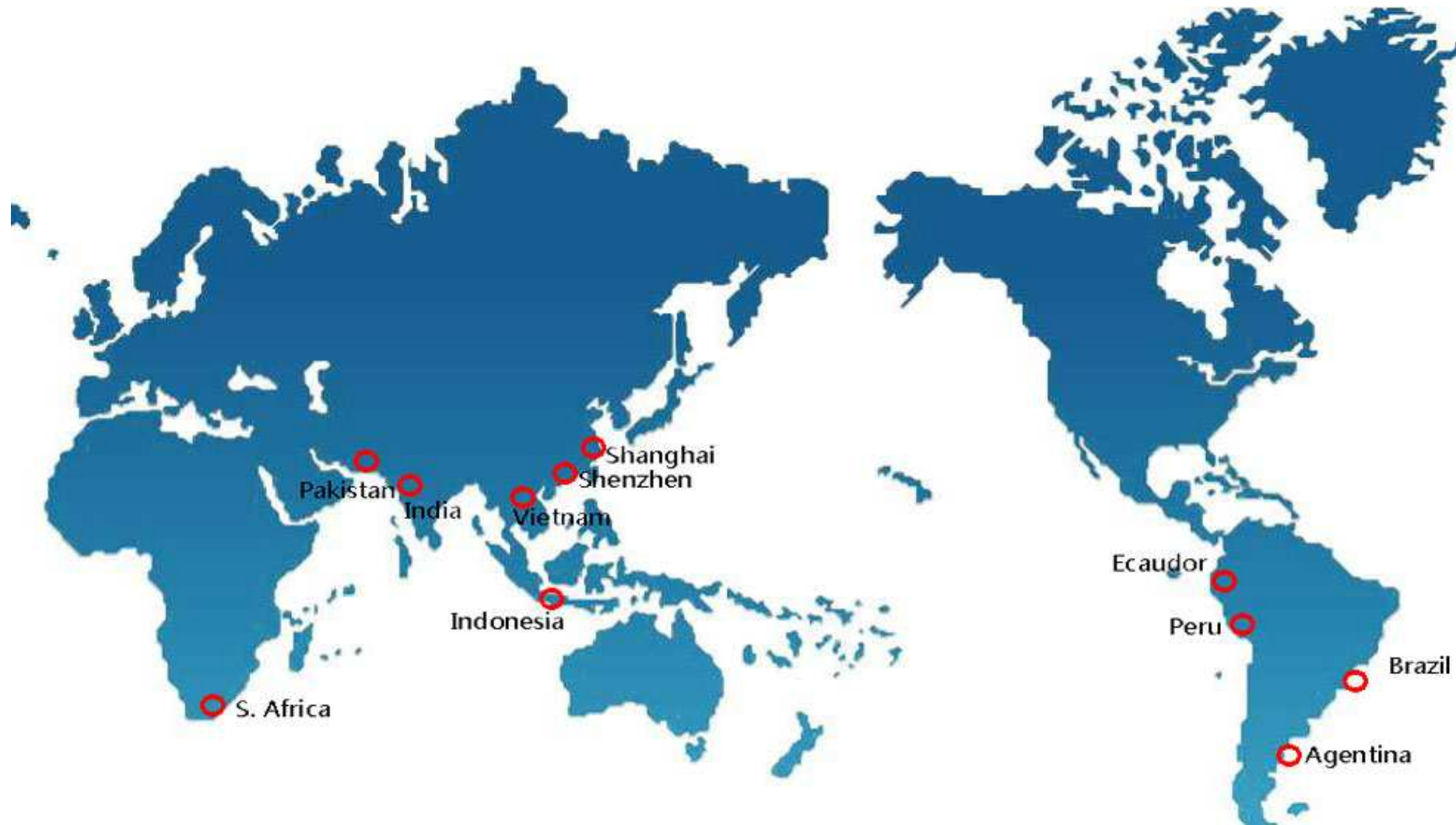
- Leading wireless terminal products providers to Operators and Branded Customers.
- World-class manufacturers for best quality and on-time delivery.
- Strong R&D team for product development and global technical support

## ***Product Lines (Last-mile solutions provider)***

- Fixed Wireless Phones (FWPs) : 2G (CDMA, GSM/GPRS), 3G(EVDO), 4G(LTE)
- Modules/Modems (M2M) : 2G (CDMA, GSM/GPRS), 3G(EVDO), 4G(LTE)
- USB modems : 3G(EVDO), 4G(LTE)
- WiFi Routers : 3G(EVDO), 4G(LTE)
- Security Camera Products : GSM/GPRS

## Global Operations

- More than 10 offices around world



# Technologies Licenses

Fully licensed for manufacturing CDMA and 3G subscriber products globally



REUTERS

“ AsiaTelco's license will enable the company to expand its existing offerings to include all 3G CDMA standards and to join market leaders in driving down handset prices and increasing wireless capabilities. ”

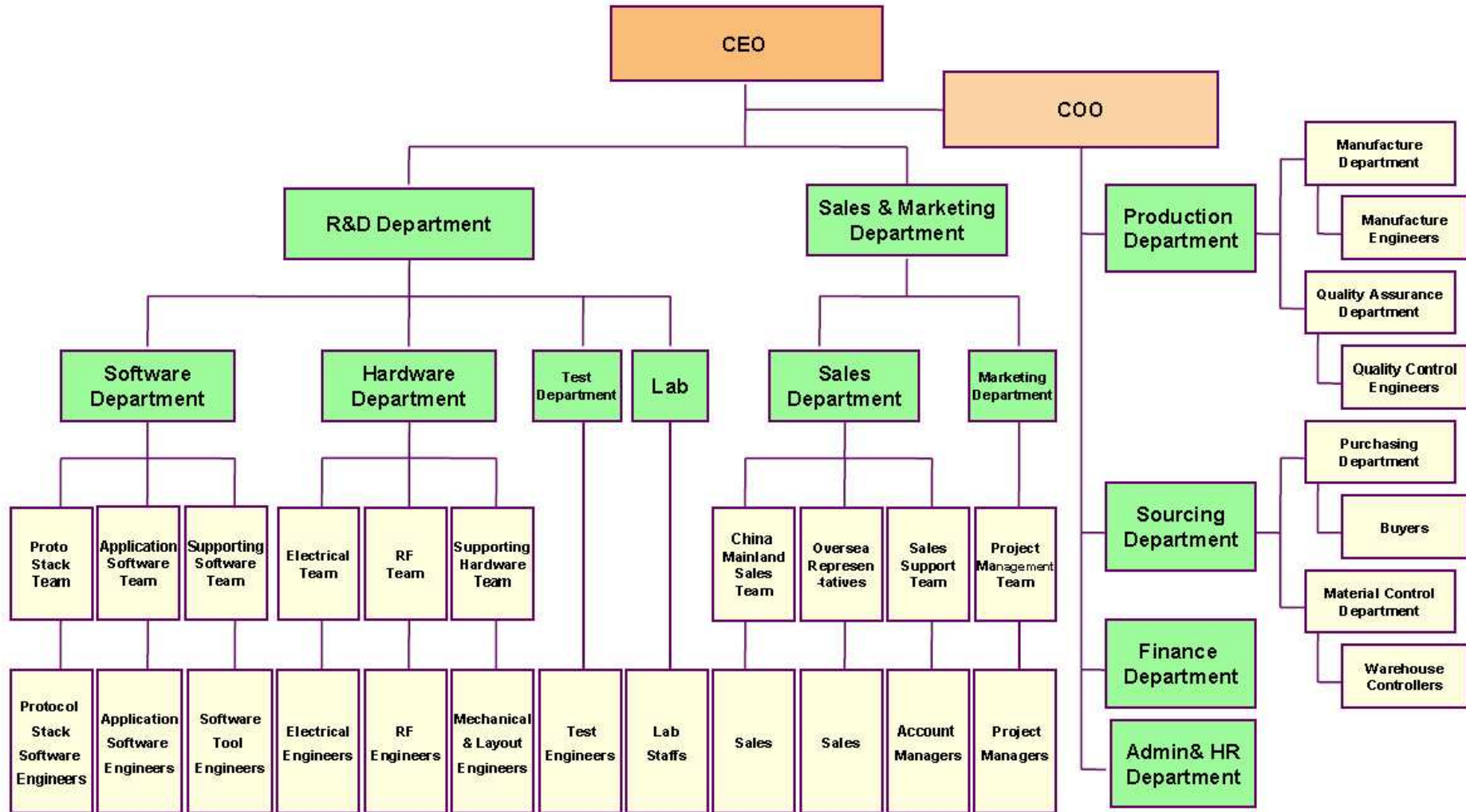


- Marvin Blecker  
President of Qualcomm  
Technology Licensing

## Chipsets Licensed by Asiateco



# Organization Structure



# Certificates

## Certificate of New and High-tech enterprises



## ISO 9000 Certificates



## FCC Certificates



## Registered of Trade Mark



## Certificate of Homologation



# Intellectual Property

RTE Type Approval Certificate



Patent



Software Approval Certificate



Software Copyright

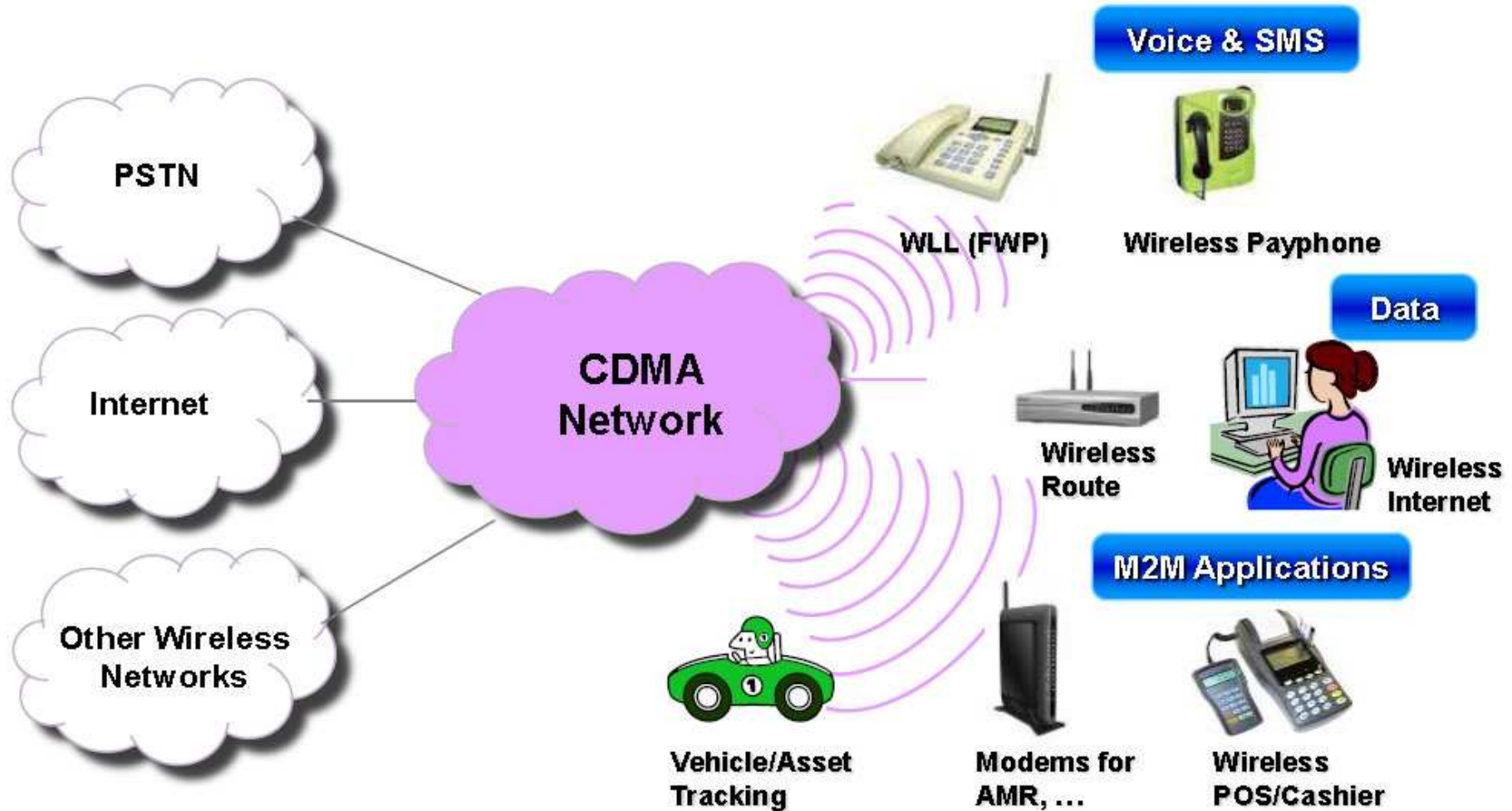




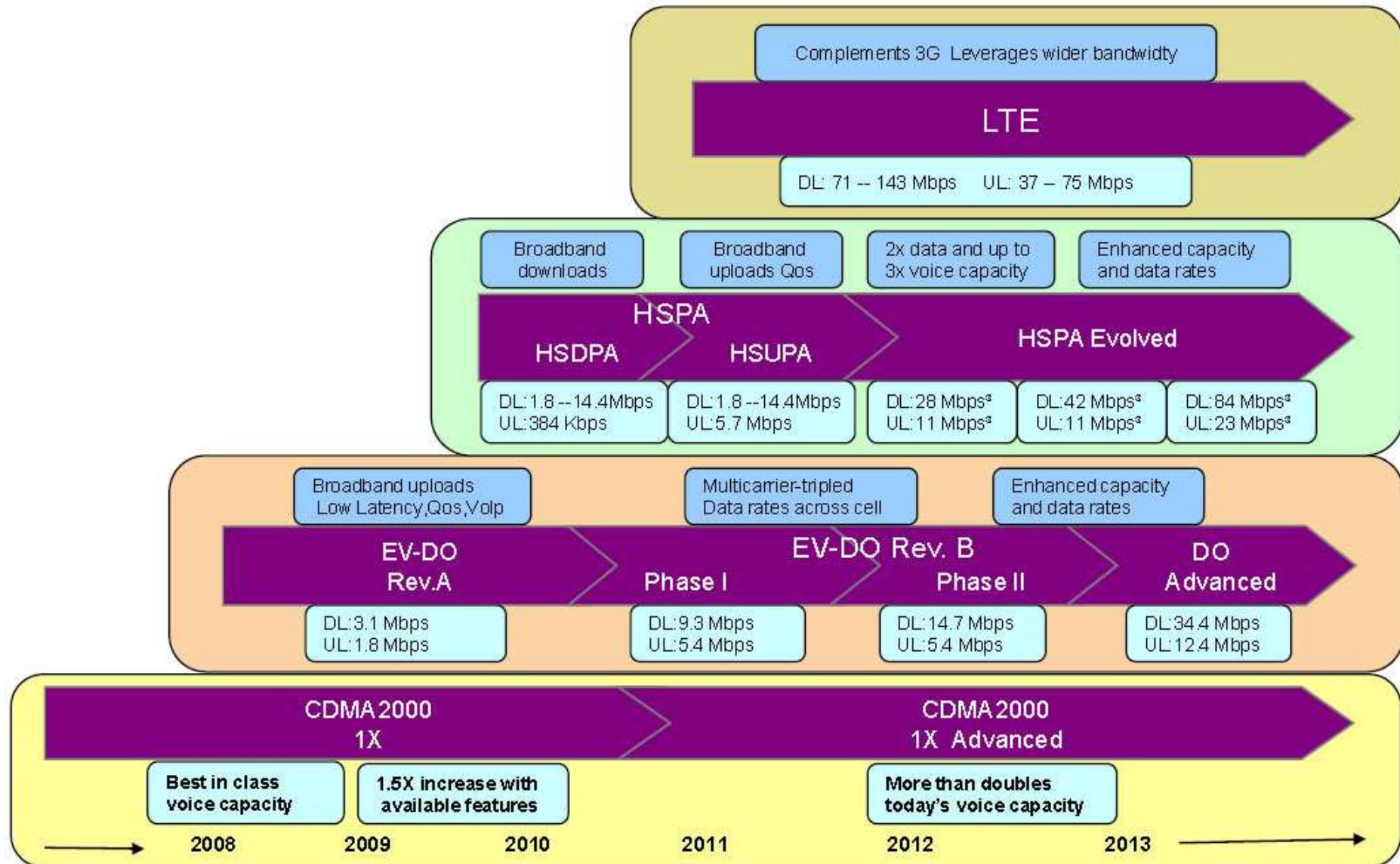
# Wireless Solution

## Atel products covers majority wireless terminal applications

- Voice and Text Messaging Applications.
- High-speed data with GPRS/CDMA/3G networks.
- Industry applications (M2M) utilizing wireless networks.
- Reduced usage charges.
- Easy installation and maintenance.



# Major Technology Evolution Path



# Product Road Map



# Current FWP Products (CDMA, GSM)

**V Series**



**H Series**



**S Series**



**G Series**



**L Series**



**D Series (New)**



# Module Products

Atel designed 15 models of modules which can be used in many applications



CDMA

- WM6681 / WM6681-D
- CDMA 2000 1X 800MHz
- WM6690 / WM6690-D
- CDMA 2000 1X 1900MHz
- WM6615 / WM6615-D
- CDMA 2000 1X 450MHz Block A/C
- R-UIM/Non R-UIM Optional
- Data rate up to 153.6kbps (WM6615-D)
- 45(L) x 35 (W) x 3 (T) mm
- SMT Module Design for WLL



EVDO

- WM8280
- CDMA 2000 EVDO networks
- provides a high speed solution for FWP, net-card, M2M
- 35mm\*45mm\*2.8mm
- SMT Type



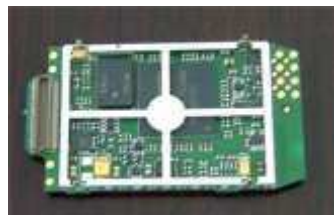
CDMA

- WM6880 / WM6880-D
- CDMA 2000 1X 800MHz
- R-UIM/Non R-UIM Optional
- Data rate up to 153.6kbps (WM6880-D)
- 28(L) x 40.2 (W) x 2.7 (T) mm
- SMT Module
- Design for WLL and M2M
- WM6815 / WM6815-D
- CDMA 2000 1X 450MHz Block A/C
- R-UIM/Non R-UIM Optional
- Data rate up to 153.6kbps (WM6815-D)
- 28(L) x 40.2 (W) x 2.7 (T) mm
- SMT Module
- Design for WLL and M2M



GSM

- WM5509-D
- GSM/GPRS 900+1800MHz Dual-band
- WM5509-P
- GSM/GPRS 850+1900MHz Dual-band
- CSD upto 14.4kbps
- 32(L) x 33(W) x 3.5(H) mm
- SMT Module
- Design for WLL and M2M



WM6080



WM6089

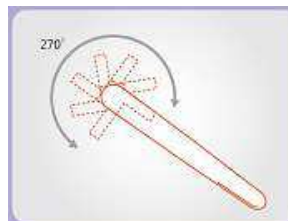


EVDO

LTE

# 3G EVDO Product Series

| Product Series             | Model  |
|----------------------------|--|
| EVDO Data Card             | ADA-S801, ADA-S802, ADA-K450(450M), ADA-R891, ADA-R892       |
| EVDO Module                | WM8280   |
| EVDO PCI Express Mini Card | EP89 (800/1900M), EP45 (450M)                                |
| EVDO Fixed Wireless Phone  | AWP-VE80, AWP-VE89, AWP-VE90<br>AWP-AE80, AWP-AE89, AWP-AE90 |



## WiFi 3G EVDO Routers



## Security Camera Products

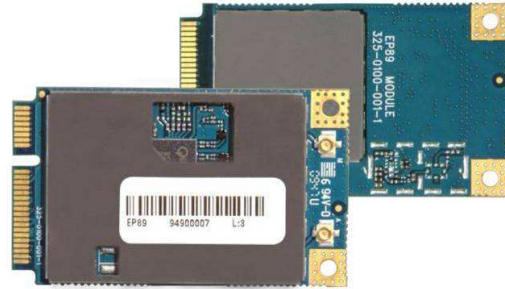


**ASC-GA900**



**ASC-GB900**

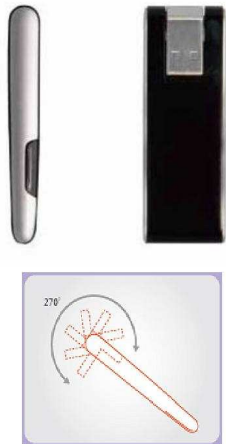
# 4G LTE Products



LTE Module **LP-xx**



CPE Outdoor **DTL-xx**



USB Dongle **ADA-RLxx**



WiFi Router **ALR-Wxx**

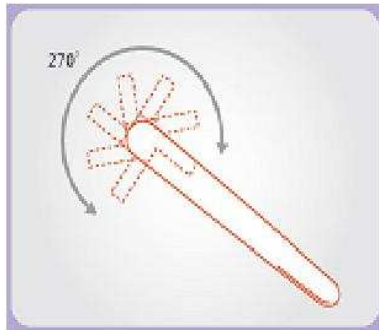
**Q4, 2010**

**Q1, 2011**

**Q2, 2011**



# LTE USB Dongles



**ADA-RLxx**

- ✓TDD/FDD-LTE
- ✓Category - 3compliant
- ✓Single band
- ✓Supports698 - 2690MHz
- ✓BW1.4 - 20MHz
- ✓MIMO Support
- ✓USB2.0 Interface
- ✓OS: Windows, MAC, Linus
- ✓Connection Manager
- ✓USIM Support

# LTE Module



- ✓TDD/FDD-LTE
- ✓Category - 3compliant
- ✓Supports698 - 2690MHz
- ✓Triple band
- ✓BW1.4 - 20MHz
- ✓MIMO Support
- ✓OS: Windows, MAC, Linus
- ✓Connection Manager
- ✓USIM Support

**LP-xx**

# LTE WiFi Routers



**ALR-Wxx**

- ✓TDD/FDD-LTE
- ✓Category - 3compliant
- ✓Supports698 - 2690MHz
- ✓Tripleband,BW1.4 - 20MHz
- ✓MIMO Support
- ✓OS: Windows, MAC, Linus
- ✓Connection Manager
- ✓USIM Support
- ✓4 Ethernet Ports + USB2.0
- ✓WiFi 802.11n/g/b
- ✓2200 mAh Battery Backup

# LTE Outdoor CPE



- ✓TDD/FDD-LTE
- ✓Antenna Gain, 10dBi
- ✓Category - 3compilant
- ✓Supports698 - 2690MHz
- ✓Triple band
- ✓BW1.4 - 20MHz
- ✓MIMO Support
- ✓USIM Support
- ✓Ethernet WAN Port 100Mbps
- ✓Rugged outdoor design

**DTL-xx**

# Worldwide Customers



## ***Confidentiality***

*This document contains information that is proprietary and confidential, copying this document is prohibited without permission from Asiatelco's authorized representative*

## ***Contact information:***

*No.289 Bisheng Road, Building 8, 3F, Zhangjiang Hi-tech Park, Pudong, Shanghai 201204, China*

*Tel: 021-51688806 Fax: 021-33932408 Email: [sales@asiatelco.com](mailto:sales@asiatelco.com)*

